

Neighborhood Street Fund Program Update & 2022-2024 Cycle Project Selection

Levy Oversight Committee

September 6, 2022

Agenda

1. NSF Program Update

2. 2022-2024 NSF Program Cycle

- Review modified approach for this cycle
- Share project candidates
- Provide review instructions for LOC members
- Return in November for final project selection by LOC

NSF Program Update



NSF program overview



The Neighborhood Street Fund (NSF) is a City program that enables the community to propose and help prioritize transportation-related projects that are then built by SDOT.



NSF funding cycles

- The Levy to Move Seattle provides \$24M for three, 3-year program cycles: 2016-2018, 2019-2021, 2022-2024
- Project selection, design, and construction typically occurs within each 3-year cycle
- The prioritization process is community-driven, with final project selection by the Levy Oversight Committee (LOC)

Typical NSF cycle:



Project eligibility

- Cost estimate of \$100k and \$1M
- Located in City right-of-way
- Aligns with City design standards

Past projects include:

- New sidewalks and sidewalk repair
- New pedestrian crossings
- Bike safety improvements
- Traffic calming
- Stormwater improvements
- Public art and festival streets



Project selection process

1. Submitting project ideas

- Any individual or organization can submit an idea
- SDOT reviews all applications for eligibility

2. Two-phase community prioritization

- Initial community prioritization of all eligible projects
- Followed by community voting on top prioritized projects from each Council District

3. Final project selection by LOC

- Top community-voted projects advance to LOC for final project selection



Equitable improvements

In response to LOC feedback, we improved the community process to be more equitable:

- In 2019, we partnered with the Department of Neighborhoods on outreach focused in historically underserved communities
- Attended in-person, in-language community events to collect project ideas and help community prioritize projects
- LOC selected 15 projects with the majority in historically underserved areas, and advanced \$2M to fund additional improvements



Equitable process improvements for the 2019-2021 cycle resulted in record community participation

Levy deliverable status

As of September 2022:

- Levy deliverable goal: 20-35 projects
- Complete: 19 projects
- Remaining: 8 projects + Cycle 3 projects TBD

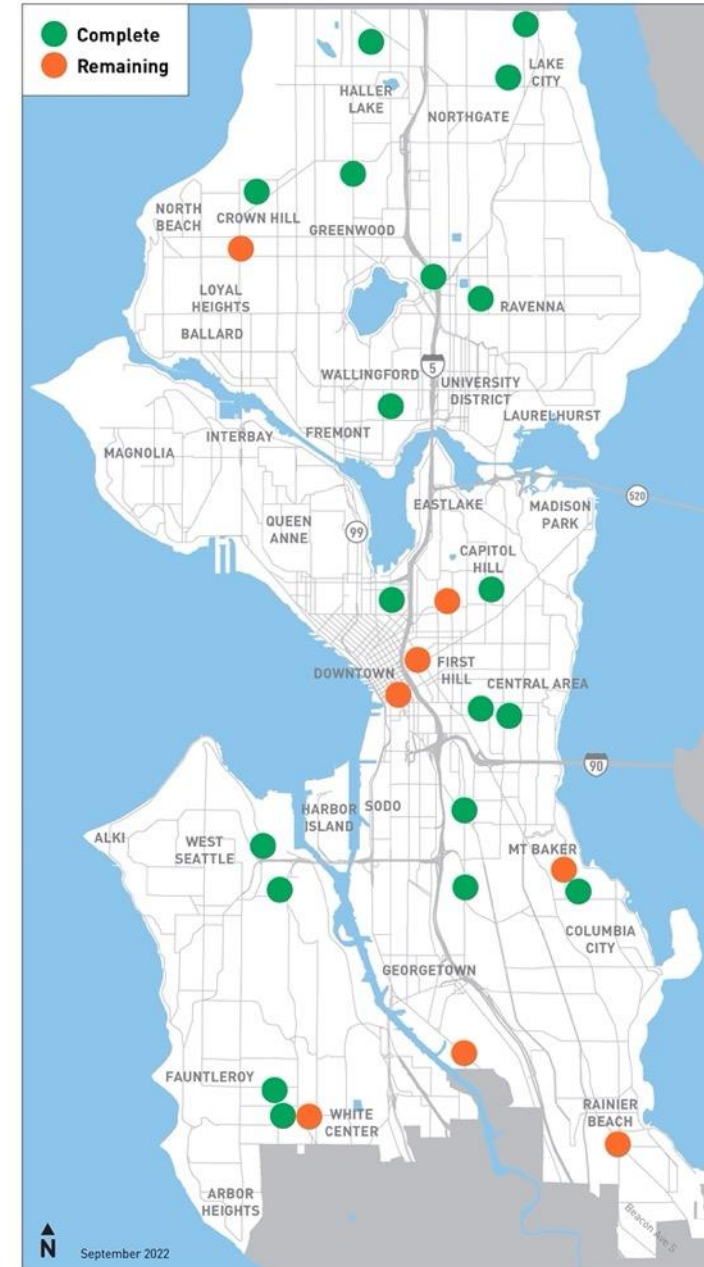
	Cycle 1 2016-2018	Cycle 2 2019-2021	Cycle 3 2022-2024	Total
Projects selected	12	15	TBD	27
Complete	11	8	TBD	19
Remaining	1*	7**	TBD	8

*Delayed to Q4 2022 due to coordination with private development

**3 projects in construction with delivery by Q4 2022; 4 projects now planned for delivery in 2022-2023 due to various factors: design revisions, coordination with other projects, and delays due to concrete delivery strike

September 6, 2022

Levy to Move Seattle Neighborhood Street Fund Projects

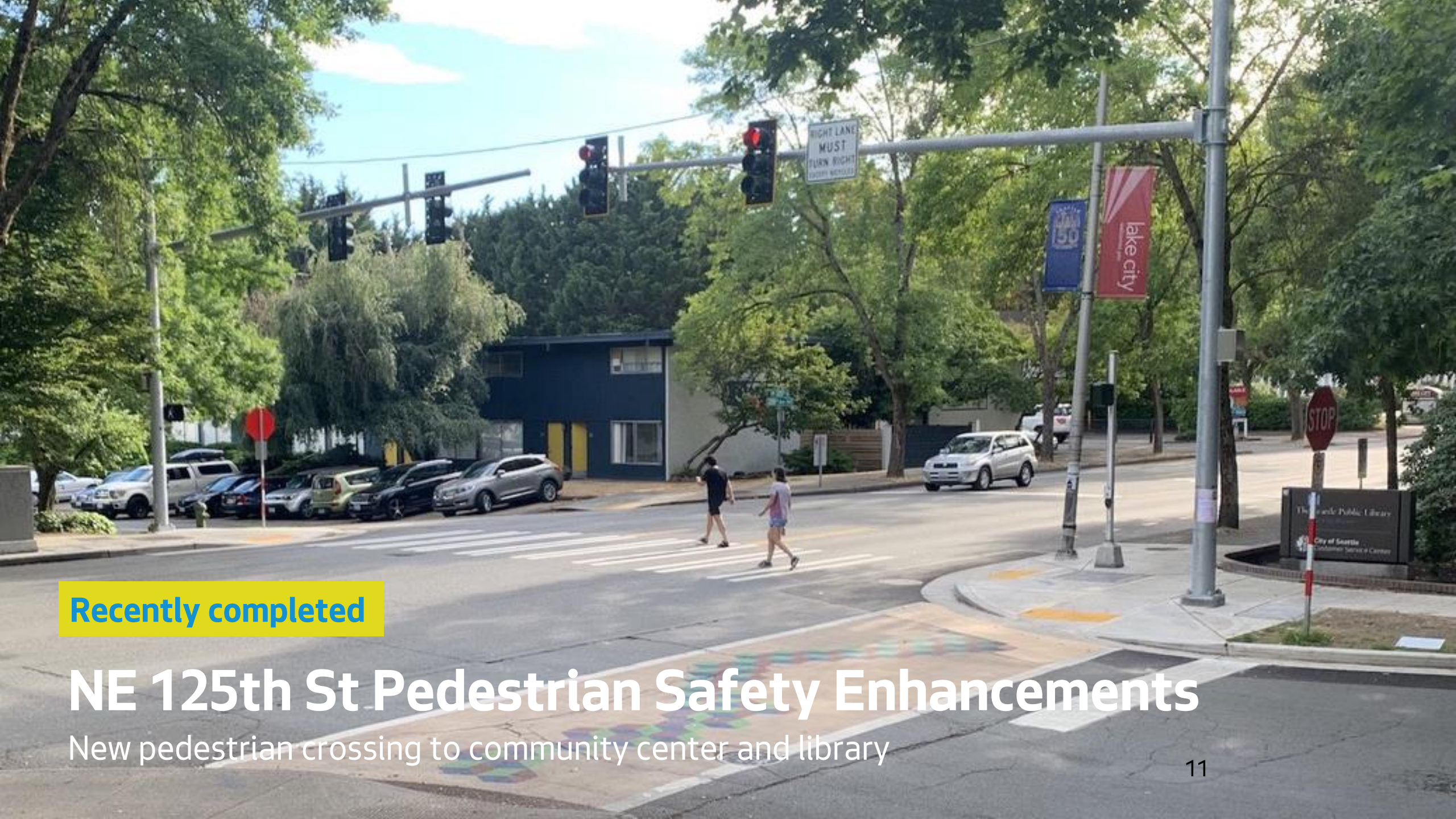




Recently completed

Little Brook Sidewalks

New sidewalks connecting to a neighborhood park



Recently completed

NE 125th St Pedestrian Safety Enhancements

New pedestrian crossing to community center and library



Recently completed

North Seattle School Crossing Safety Enhancements

Community crosswalk connections to four schools



Recently completed

NE 65th St Pedestrian Safety Enhancements

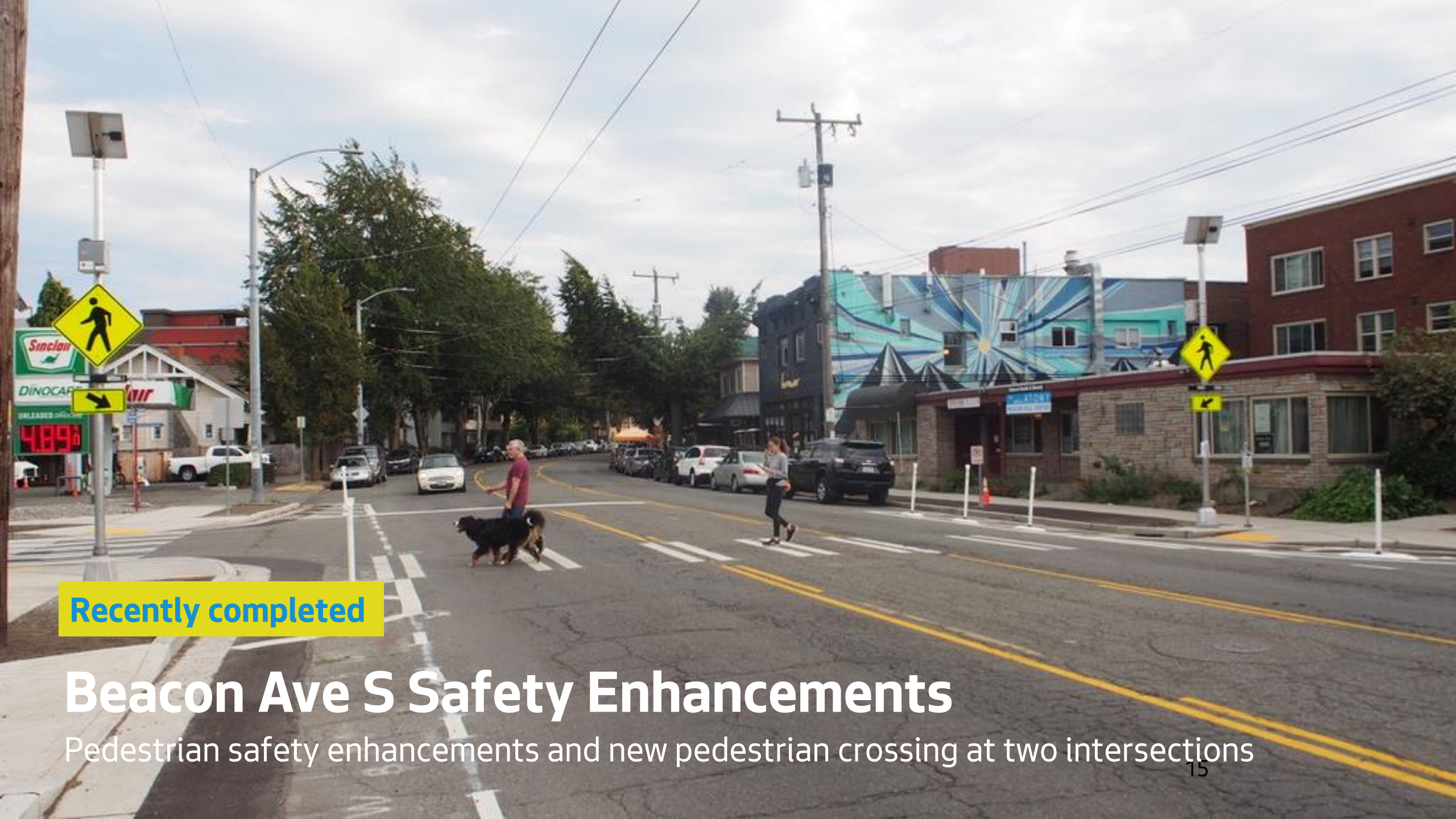
Three new pedestrian crossings connecting commercial areas and bus stops



Recently completed

Denny-Stewart-Yale Safety Enhancements

Pedestrian safety enhancements, new turn lanes, and improved vehicle access to I-5



Recently completed

Beacon Ave S Safety Enhancements

Pedestrian safety enhancements and new pedestrian crossing at two intersections



Recently completed

Delridge Neighborhood Greenway Safe Connections

New protected bike lane and improved bike connection to the West Seattle Bridge Trail



25th Ave SW

Recently completed

SW Barton St Pedestrian Safety Enhancements

New pedestrian crossing to commercial area and bus stops

Program challenges and opportunities

Equitable outreach

- Prioritize outreach in historically underserved communities during the application & voting process

Project candidate scoping

- Build flexibility into early scoping, as some concepts and costs may need to be adjusted during design

Unselected projects

- Always more ideas than available funding; we work to find opportunities to build unselected projects that are still community priorities



This new walkway on Sylvan Way SW was a previously unselected NSF project delivered as part of the Reconnect West Seattle program

Looking ahead

- NSF provides space for community ideas that may not otherwise be prioritized
- Important to build on equitable process improvements and ensure the program serves historically underserved communities



"Aurora Bright Dawn" artwork on Oak Tree Village Pedestrian Bridge, 2016-2018 NSF project

2022-2024 NSF Cycle Project Selection



Changes to 2022-2024 cycle

Modified process that leverages equitable outreach from previous cycle:

- We reconsidered the large pool of unselected applications submitted for 2019-2021 cycle
- Focused on projects located in geographic equity areas
- No new applications considered, no new community prioritization process

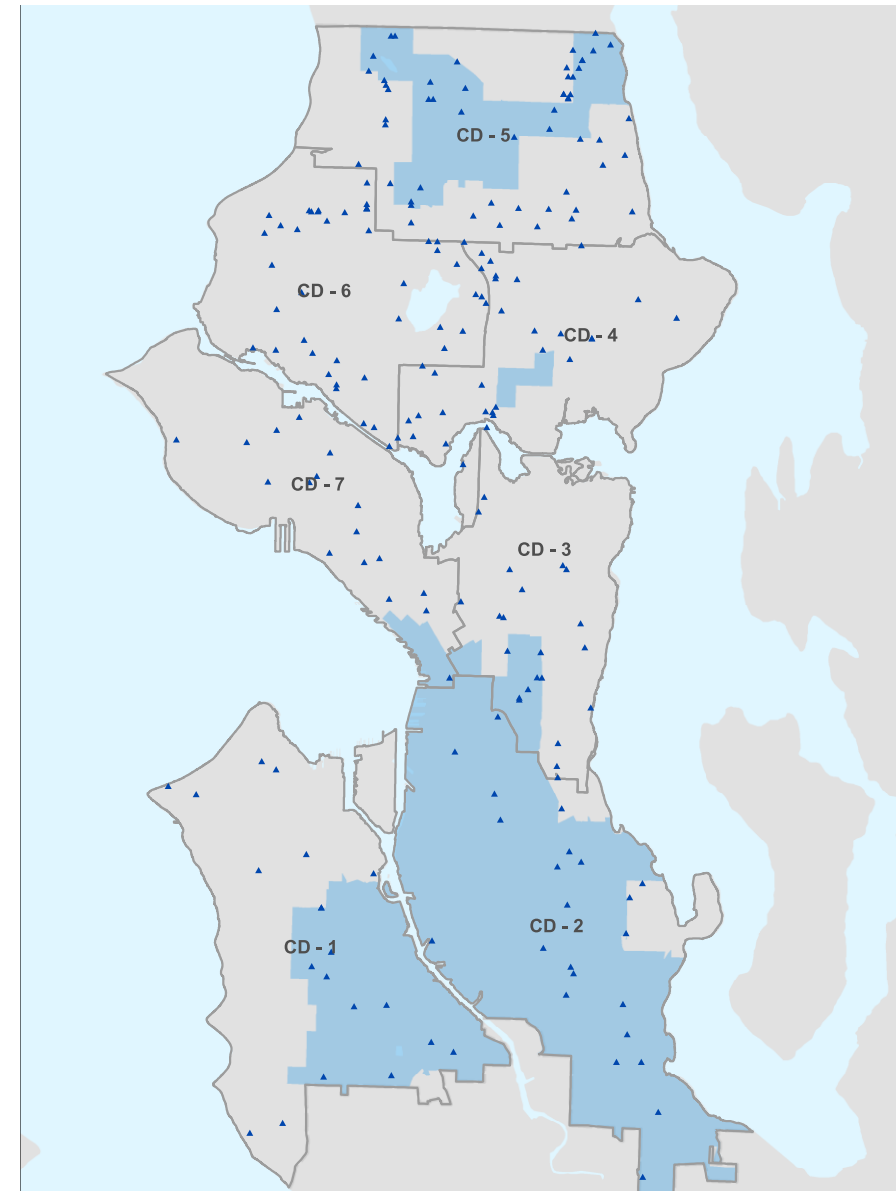
Schedule:



Changes to 2022-2024 cycle

Geographic Equity Areas:

- Include areas of highest need based on:
 - City's Race and Social Equity Index
 - Displacement Risk Index
 - COVID-19 cases reported by King County
- 211 unselected projects from last cycle
- 58 are in geographic equity areas and served as the candidate pool for this cycle



Initial project candidate review by SDOT

We reviewed 58 project candidates for current eligibility:

- **15** projects already completed or planned for delivery by other SDOT programs
- **26** projects not recommended to advance due to high cost, limited right-of-way, or lower community priority from 2019 voting
- **17** projects that had higher community priority and met eligibility requirements to advance to LOC for consideration and final selection

For the 17 final project candidates, we:

- Met with the original applicants to confirm interest and discuss scope changes
- Developed concepts and planning-level cost estimates to help inform project selection

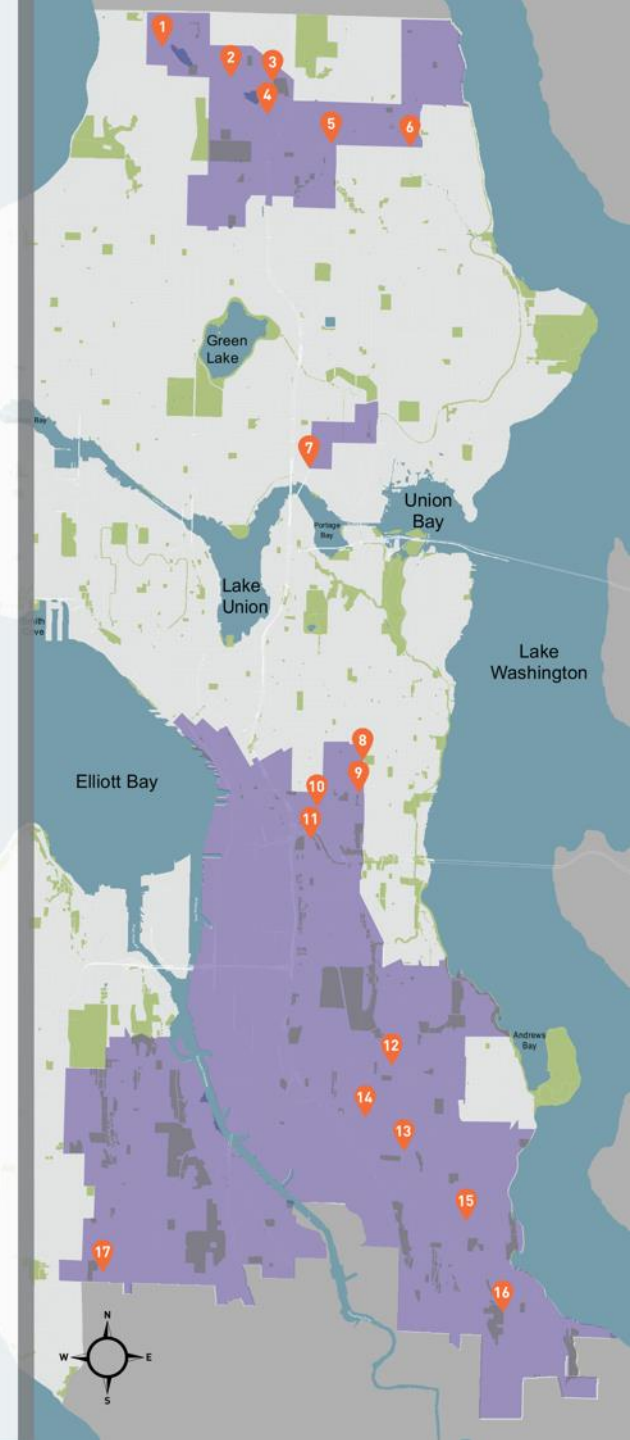
Project candidates

- 17 projects distributed across equity areas
- Proposed improvements include:
 - New pedestrian crossings
 - Sidewalks and walkways
 - Stormwater improvements
 - Bike safety improvements
 - Other safety improvements
- Project costs range from \$125k to \$800k
- All 17 projects total \$7.65M
- **\$4M available this cycle to fund 7-11 projects**

2022-2024 NSF Cycle Project Candidates

- 1 N 136th St Stormwater Enhancements
- 2 N 130th St and Ashworth Ave N Safety Enhancements
- 3 N 128th St Walkway
- 4 N 122nd St Walkway
- 5 NE 115th St Walkway
- 6 NE 115th St and 34th Ave NE Safety Enhancements
- 7 Roosevelt Way NE and NE 41st St Safety Enhancements
- 8 Garfield Superblock Enhancements
- 9 E Yesler Way and 22nd Ave Safety Enhancements
- 10 Rainier Ave S and S Jackson St Safety Enhancements
- 11 Golf Dr S and 14th Ave S Safety Enhancements
- 12 S Dawson St Sidewalk Repair
- 13 Chief Sealth Trail Connections
- 14 Beacon Ave S Trail Crossing Enhancements
- 15 S Rose St Sidewalk Repair
- 16 55th Ave S Sidewalk
- 17 26th Ave SW and SW Cambridge St

Geographic Equity Areas



Review instructions for LOC members

Ask of LOC members:

- Review project candidates and make final project selection at your November meeting

Schedule:

- **September 6:** Receive project candidate packet and instructions for reviewing
- **By October 25:** Review projects on your own and rank the projects online (link emailed)
- **November 1:** Review preliminary ranking results, discuss, and formally vote on a final package of projects that fit into the available budget of \$4M

Project candidate summary packet

Packet includes:

- Program overview
- Review instructions
- Project candidate map
- Project candidate summaries:
 - Location
 - Cost estimate
 - Project description, risks, and other considerations
 - Additional context: community votes, equity need, and safety need



2 N 130TH ST AND ASHWORTH AVE N SAFETY ENHANCEMENTS

Location: N 130th St and Ashworth Ave N

Description: New pedestrian signal and crossing improvements

Cost Estimate: \$500,000

Community Votes: Medium

Equity Need: Medium

Safety Need: High

Project Summary
N 130th St is busy arterial located just south of Ingraham High School. Many students cross N 130th St at Ashworth Ave N to access a bus stop or walk or bike from the surrounding neighborhood. The applicant proposes crossing improvements at Ashworth Ave N to help students safely cross N 130th St. The proposed design will include a new full signal at the intersection, new curb ramps, new crosswalks, and a new sidewalk on the south leg of the intersection.

Potential Risks and Other Considerations
This project will be coordinated with planned improvements on N 130th St including paving, redesigning the road from 4 to 3 lanes, and adding bike lanes. The new signal will also support a future neighborhood greenway on Ashworth Ave N.

Existing Conditions

Proposed Improvements

NEIGHBORHOOD STREET FUND 2022-2024 CYCLE PROJECT CANDIDATES | 7

Preliminary online ranking

- Link emailed to LOC members
- Enter name and email for tracking purposes*
- Rank projects from most preferred to least preferred
- Complete online ranking by **October 25**
- We will share the preliminary results a few days before your November 1 meeting

This is not a formal committee vote, but it will allow us to efficiently gather preliminary feedback from you and other LOC members.

*Results will be anonymous and aggregated

September 6, 2022

The screenshot shows the top of a web form. The header is blue with the Seattle Department of Transportation logo and the text "Neighborhood Street Fund: 2022-2024 Cycle Project Candidates". Below the header is a grey bar with a language dropdown menu set to "English". The main content area is white and contains two sections:

- * 1. Contact Information**: Includes input fields for "Name" and "Email Address".
- * 2. Please rank the 2022-2024 NSF Cycle Candidates**: A list of 13 project candidates, each with a dropdown menu for ranking. The candidates are:
 - N 136th St Stormwater Enhancements
 - N 130th St and Ashworth Ave N Safety Enhancements
 - N 128th St Walkway
 - N 122nd St Walkway
 - N 115th St Walkway
 - N 115th St and 34th Ave NE Safety Enhancements
 - Roosevelt Way NE and NE 41st St Safety Enhancements
 - Garfield Superblock Enhancements
 - E Yesler Way and 22nd Ave Safety Enhancements
 - Rainier Ave S and S Jackson St Safety Enhancements
 - Golf Dr S and 14th Ave S Safety Enhancements
 - S Dawson St Sidewalk Repair

At the bottom of the form, there is a progress indicator showing "0 of 2 answered".

Next Steps

LOC members:

- Review project candidates
- Submit preliminary votes online by October 25
- Be prepared to discuss and vote on final package of projects at your November 1 meeting

Staff will be on hand to answer any questions to help support your review:

- Simon Blenski, NSF Program Manager
- nsf@seattle.gov or 206-741-2648